

Sensitive ELISAs and Detection Assays

Accurate, fast, and sensitive measurement of physiologically important biomolecules

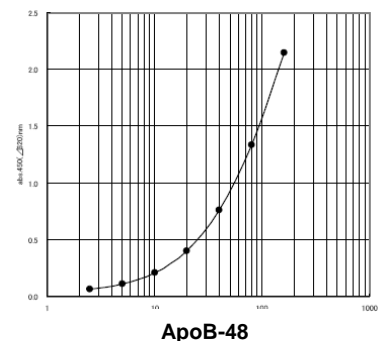
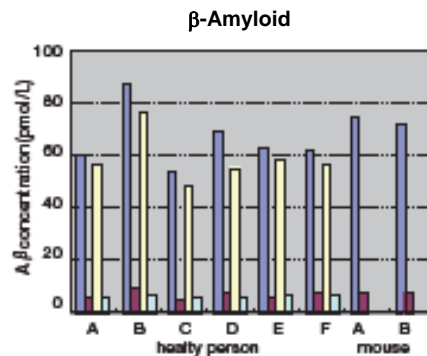
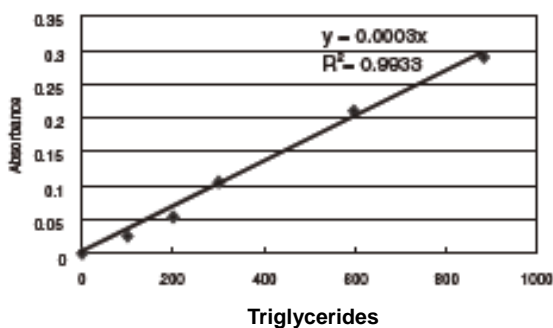
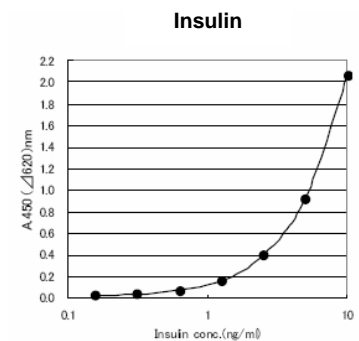
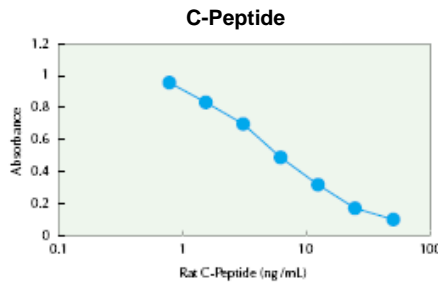
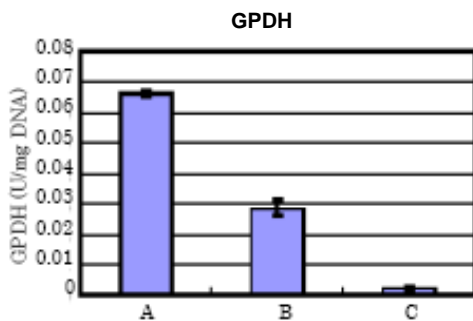
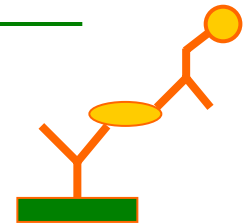
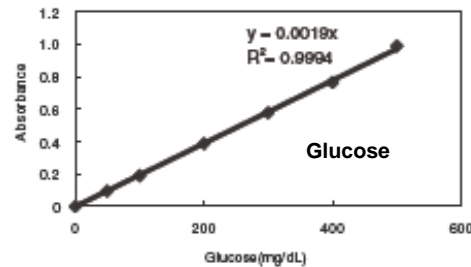
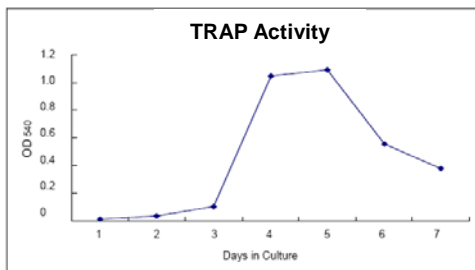
Select from our offering of more than 50 sensitive and convenient assays for various physiologically important biomolecules. Rapid and robust measurements of some of the following markers implicated in diabetes, obesity, cardiovascular disease, and related conditions:

Adiponectin
Aggrecanase
Insulin
APO B-48

Beta-Amyloid
C-Peptide
esRAGE
Glucagon

GLP-1/2
Glucose
HGF
Leptin

Collagenase
Resistin
TRAP
Uric Acid



B-Bridge's ELISAs and Detection Assays

Product Description	Cat. #	Size	List Price
A/G Assay Kit	292-63901	1,000 tests	\$250
Acidic Mucopolysaccharide Assay Kit	AK03	100 tests	\$455
Adiponectin (Human) ELISA Kit	K1001-1	1 kit	\$500
Adiponectin (Human) Serum Control, High and Low	C1001-HL	2 vial	\$65
Aagrecanase, human, Activity Assay	30510111	96 tests	\$725
Aagrecanase, human, High-Sensitivity ELISA Activity Assay	30510211	96 tests	\$818
Albumin Mouse ELISA Kit	634-04301	96tests	\$731
Albumin Rat ELISA Kit	631-04311	96tests	\$731
ALP Assay Kit	291-58601	900 tests	\$175
APO B-48 (Human) ELISA KIT	637-10641	96 wells	\$861
Apoptosis in situ Detection Kit	298-60201	40 tests	\$600
beta-Amyloid (Human, 1-40) ELISA Kit	292-62301	96 tests	\$780
beta-Amyloid (Human, 1-40) ELISA Kit II	298-64601	96 tests	\$780
beta-Amyloid (Human, 1-42) ELISA Kit	298-62401	96 tests	\$780
beta-Amyloid (Human, 1-42) ELISA Kit, High Sensitive	296-64401	96 tests	\$900
beta-Amyloid (Human/Rat, 40) ELISA Kit	294-62501	96 tests	\$780
beta-Amyloid (Human/Rat, 42) ELISA Kit	290-62601	96 tests	\$780
beta-Amyloid (Human/Rat, 42) ELISA Kit II	294-64701	96 tests	\$780
beta-Amyloid (Human/Rat, 42) ELISA Kit, High Sensitive	292-64501	96 tests	\$900
C-Peptide (Rat) ELISA Kit	295-57401	96 tests	\$780
C-Peptide Rat (U type)	639-07271	96tests	\$997
C-Peptide-Mouse (U type)	631-07231	96tests	\$864
Creatinine Assay Kit	290-65901	500 tests	\$200
DNA Quantitation Kit	AK06	200 tests	\$273
esRAGE ELISA Kit	K1009-1	1 kit	\$600
GLP-1 (Rat) ELISA Kit	291-59201	96 assays	\$780
GLP-2 (Rat) ELISA Kit	292-60601	96 wells	\$780
GLUCAGON (Rat) ELISA Kit	297-57101	96 tests	\$780
Glucose Assay Kit	298-65701	1,000 tests	\$260
GPDH Assay Kit	AK01	100 tests	\$455
Hepatocyte Growth Factor (HGF, Rat/Mouse) ELISA	K2002-1	1 kit	\$650
Hepatocyte Growth Factor (Human, HGF) ELISA	K2001-1	1 kit	\$650
Insulin - Mouse (S type)	636-07281	96tests	\$823
Insulin Standard Solution, Hamster (10ng/ml)	634-07101	5 x 500 ul	\$664
Insulin Standard Solution, Rabbit (10ng/ml)	631-07111	5 x 500 ul	\$664
Insulin-Doa-T	633-01451	96 tests	\$678
Insulin-Mouse (H type)	630-10371	96 tests	\$638
Insulin-Mouse-T	634-01481	96 tests	\$638
Insulin-Porcine	630-01461	96 tests	\$678
Insulin-Rat (H type)	633-10621	96 tests	\$598
Insulin-Rat (S type)	637-07191	96 tests	\$823
Insulin-Rat-T	637-01471	96 tests	\$598
Leptin (Human) ELISA Kit	K1005-1	1 kit	\$350
Leptin (Mouse/Rat) ELISA Kit	K1006-1	1 kit	\$350
Leptin (Rat) ELISA Kit	297-57601	96 tests	\$630
Leptin Receptor (Human) ELISA Kit	K1007-1	1 kit	\$550
Lipid Assay Kit	AK09	1 set	\$273
MMP-13, collagenase 3, human, ELISA Activity Assay	30518101	96 tests	\$611
Pancreatic Beta-cell Staining Kit	AK10	24 tests	\$455
Resistin (Human) ELISA Kit	K1003-1	1 kit	\$500
Resistin (Mouse) ELISA Kit	K1004-1	1 kit	\$500
Resistin (Rat) ELISA Kit	K1014-1	1 kit	\$500
TRAP Staining Kit	AK04	10 plates	\$273
Triolcyderide Assay Kit	290-63701	1,000 tests	\$350
Type I collagenase assay kit	AK07	240 tests	\$545
Uric Acid Assay Kit	292-64001	1,300 tests	\$250